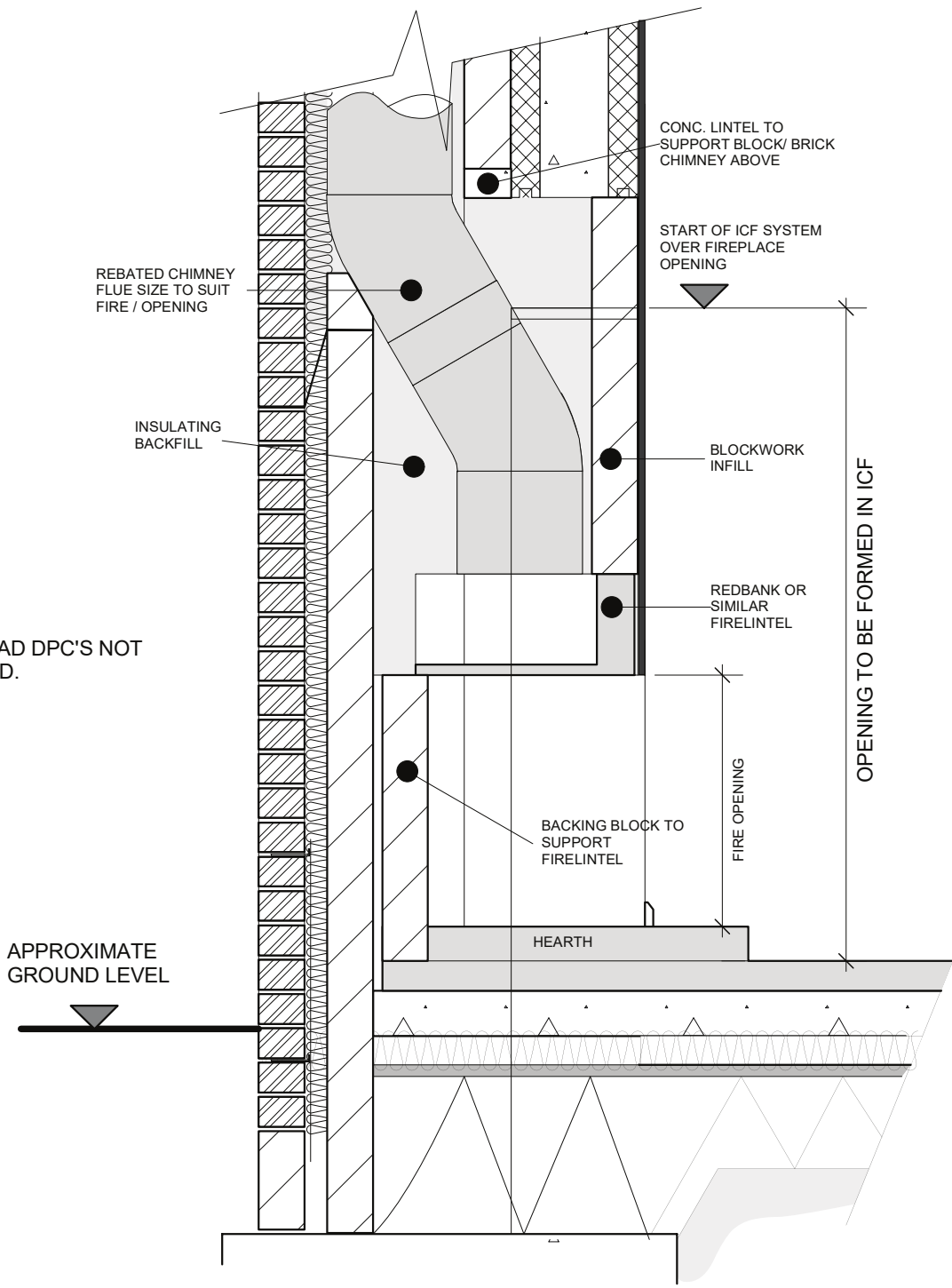


NOTE: LEAD DPC'S NOT INDICATED.



NOTE: ALTHOUGH IT MAY NOT BE NECESSARY FOR REINFORCEMENT TO BE INCORPORATED FOR STRUCTURES UP TO THREE STOREYS IN HEIGHT, STRUCTURES UP TO FOUR STOREYS AND INDIVIDUAL SITE CONDITIONS MAY DICTATE OTHERWISE & THEREFORE AN ENGINEER / ARCHITECT SHOULD BE CONSULTED IN THESE CIRCUMSTANCES. ALL DETAILS ARE TO CONSTRUCTED IN ACCORDANCE WITH CURRENT BUILDING CODES AND REGULATIONS. POLYSTEEL UK RESERVES THE RIGHT TO CHANGE INFORMATION SHOWN WITHOUT NOTICE

POLYSTEEL

POLYSTEEL Section thro' chimney with brick veneer



SCALE: Not to scale

APPROVED BY:

DRAWN BY: CSW

DATE: MAY 2005

REVISED: 08/03/19

Copyright 2005

POLYSTEEL UK Ltd

DRWG. No.

09/DET01

Tel: 01722 446 594

www.polysteel.co.uk