

POLYSTEEL LINTEL
AS REQUIRED, FOR
REQUIREMENT REFER TO
LINTEL TECHNICAL SHEET

METAL LINTEL TO SUPPORT
BRICKWORK OVER APERTURES.
SIZE AS RECOMMENDED BY
ENGINEER OR MANUFACTURER

VBUCK VINYL WINDOW
BLOCK OUT TO BE SCREWED INTO
FIRRING STRIPS WITHIN EPS

WINDOW JAMB FINISHED
WITH 12.5MM PLASTERBOARD

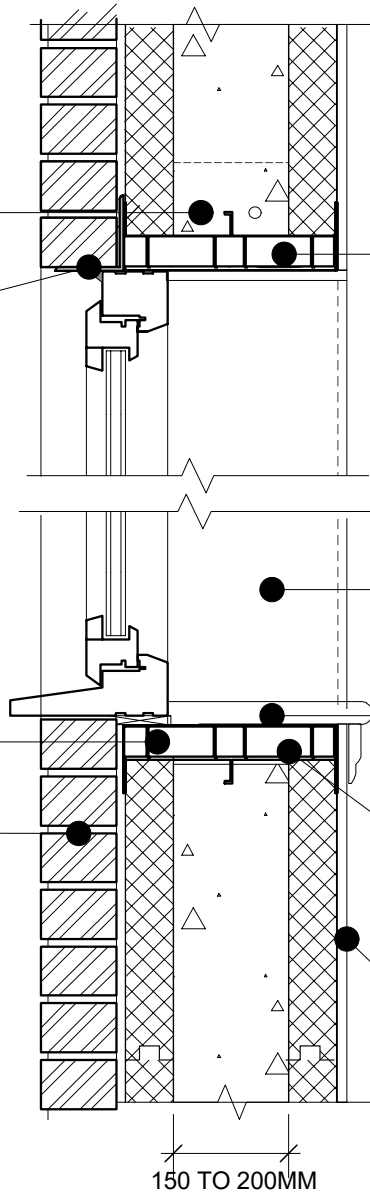
CILL BOARD

HOLES TO BE DRILLED IN SILL
VBUCK (CENTRE VOID
PORTION) TO ENABLE
CONCRETE TO BE
COMPLETELY PLACED

12.5MM PLASTERBOARD

VBUCK VINYL WINDOW
BLOCK OUT

EXTERIOR FINISH
INDICATING
BRICKWORK



150 TO 200MM

NOTE: ALTHOUGH IT MAY NOT BE NECESSARY FOR REINFORCEMENT TO BE INCORPORATED FOR STRUCTURES UP TO THREE STOREYS IN HEIGHT, STRUCTURES UP TO FOUR STOREYS AND INDIVIDUAL SITE CONDITIONS MAY DICTATE OTHERWISE & THEREFORE AN ENGINEER / ARCHITECT SHOULD BE CONSULTED IN THESE CIRCUMSTANCES. ALL DETAILS ARE TO CONSTRUCTED IN ACCORDANCE WITH CURRENT BUILDING CODES AND REGULATIONS. POLYSTEEL UK RESERVES THE RIGHT TO CHANGE INFORMATION SHOWN WITHOUT NOTICE

POLYSTEEL



**POLYSTEEL Window head and cill
with VBUCK vinyl Block out**

SCALE: 1:10

APPROVED BY:

DRAWN BY: CSW

DATE: MAY 2005

REVISED: 08/03/19

Copyright 2005

DRWG. No.

POLYSTEEL UK Ltd

07/DET05

Tel: 01722 446 594

www.polysteel.co.uk