

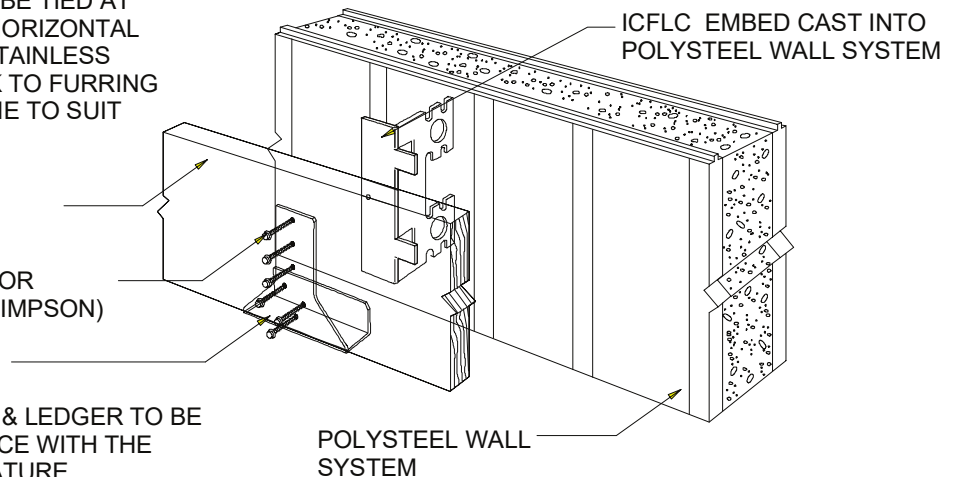
EXTERNAL FINISH INDICATIVE ONLY, HOWEVER
IF USING BRICKWORK, BRICKS TO BE TIED AT
450mm VERTICAL CTRS & 750MM HORIZONTAL
CTRS (NOT STAGGERED) USING STAINLESS
STEEL WALL TIES SCREWED BACK TO FURRING
STRIPS WITHIN EPS. LENGTH OF TIE TO SUIT
WIDTH OF BRICKWORK

WOOD OR LVL LEDGER

SELF TAPPING CONNECTOR
SCREWS SUPPLIED BY (SIMPSON)

ICFLC-W HANGER

NOTE: THE USE OF ICFLC & LEDGER TO BE
SPECIFIED IN ACCORDANCE WITH THE
MANUFACTURERS LITERATURE



NOTE: ALTHOUGH IT MAY NOT BE NECESSARY FOR REINFORCEMENT TO BE INCORPORATED FOR STRUCTURES UP TO THREE STOREYS IN HEIGHT, STRUCTURES UP TO FOUR STOREYS AND INDIVIDUAL SITE CONDITIONS MAY DICTATE OTHERWISE & THEREFORE AN ENGINEER / ARCHITECT SHOULD BE CONSULTED IN THESE CIRCUMSTANCES. ALL DETAILS ARE TO CONSTRUCTED IN ACCORDANCE WITH CURRENT BUILDING CODES AND REGULATIONS. POLYSTEEL UK RESERVES THE RIGHT TO CHANGE INFORMATION SHOWN WITHOUT NOTICE

POLYSTEEL



**POLYSTEEL Floor to junction,
Type: Timber Joist floor (detached dwellings only)**

SCALE: not to scale

APPROVED BY:

DRAWN BY: CSW

DATE: MAY 2005

REVISED: 08/03/19

Copyright 2005

DRWG. No.

POLYSTEEL UK Ltd

05/DET10

Tel: 01722 446 594

www.polysteel.co.uk